



# Adaptors

## Nuts, Locknuts & Caps



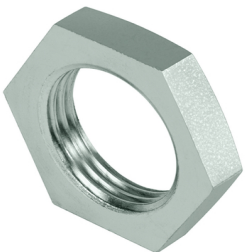
318		JIC TUBE NUT	
Part No.	Size		
	JIC		
<b>318-04</b>	7/16		
<b>318-05</b>	5/16		
<b>318-06</b>	9/16		
<b>318-08</b>	3/4		
<b>318-10</b>	7/8		
<b>318-12</b>	1 1/16		
<b>318-16</b>	1 5/16		
<b>318-20</b>	1 7/8		



319		JIC FERRULES (SLEEVES)	
Part No.	Size		
	JIC		
<b>319-04</b>	7/16		
<b>319-05</b>	5/16		
<b>319-06</b>	9/16		
<b>319-08</b>	3/4		
<b>319-10</b>	7/8		
<b>319-12</b>	1 1/16		
<b>319-16</b>	1 5/16		
<b>319-24</b>	1 7/8		



0306		JIC LOCKNUT	
Part No.	Size		
	JIC		
<b>0306-04</b>	7/16		
<b>0306-05</b>	5/16		
<b>0306-06</b>	9/16		
<b>0306-08</b>	3/4		
<b>0306-10</b>	7/8		
<b>0306-12</b>	1 1/16		
<b>0306-16</b>	1 5/16		
<b>0306-20</b>	1 5/8		
<b>0306-24</b>	1 7/8		



### Section A Hose

### Section B Hose Fittings

### Section C Quick release Couplers

### Section D Adaptors

- MALE X MALE - STRAIGHT
- MALE X MALE - 90°
- MALE X MALE - 45°
- MALE 'T' PIECES
- BULKHEADS
- PLUGS
- MALE X FEMALE - STRAIGHT
- MALE X FEMALE - 90°
- MALE X FEMALE - 45°
- MALE X FEMALE 'T' PIECES
- REDUCERS
- FEMALE X FEMALE - STRAIGHT
- SOCKETS
- 304B - BSP CAP
- 304C - JIC CAP
- FF304C - ORFS CAP
- NUTS, LOCKNUTS & CAPS**
- 318 - JIC TUBE NUT
- 319 - JIC FERRULES
- 0306 - JIC LOCKNUT

DOWTY WASHERS

### Section E Steel Tube & Fittings

### Section F Brass Fittings

### Section G Components

### Section H Machinery

[www.thc.co.za](http://www.thc.co.za)