

Quick Release Couplers



Hose Section A

Hose Fittings Section B

Quick Release Couplers Section C

SCREW IN ENERPAC - NPT
 BALL TYPE - NPT
 BALL TYPE - BSP
FLAT FACE - NPT
FLAT FACE - BSP
 PIN TYPE - NPT
 PIN TYPE - BSP

Adaptors Section D

Steel Tube & Fittings Section E

Brass Fittings Section F

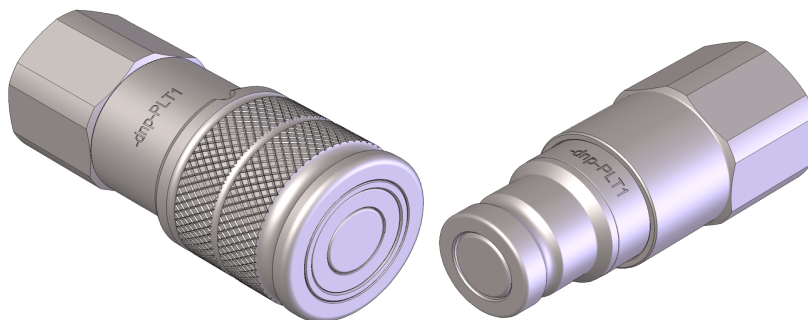
Components Section G

Machinery Section H

Flat Face Coupler - NPT & BSP

TECHNICAL DATA

- Standard:** ISO 16028 (DN06→DN30)
- Occlusion:** lat face
- Locking:** radial balls
- Material:** steel
- Finishing:** Zn-Fe (Cr III)
- Threads:** NPT
- Standard seals:** NBR
- Working temperature:** -25 °C +100 °C
- Optional seals:** FKM, EPDM or more
- Working pressure:** 250-300 bar
- Connection under pressure:** not allowed



FEMALE			MALE			Max Work Pres. (bar)	Rated Flow l/min	Max Flow Rate l/min	Fluid Spillage cc	Thread	Standard
Part No.	Burst Pres (bar)	Weight (g)	Part No.	Burst Pres (bar)	Weight (g)						
4050-03F	1000	259	4010-03F	1600	159	250	23	46	0.010	NPT 3/8	ANSI B1.20.3
4050-04F	1100	408	4010-04F	1500	154	250	45	90	0.012	NPT 1/2	ANSI B1.20.3
4050-05F	1100	451	4010-05F	1400	290	250	100	200	0.020	NPT 3/4	ANSI B1.20.3
4050-06F	1000	801	4010-06F	1300	435	250	189	280	0.030	NPT 1	ANSI B1.20.3

FEMALE			MALE			Max Work Pres. (bar)	Rated Flow l/min	Max Flow Rate l/min	Fluid Spillage cc	Thread	Standard
Part No.	Burst Pres (bar)	Weight (g)	Part No.	Burst Pres (bar)	Weight (g)						
5050-02F	1200	181	5010-02F	1800	96	300	12	24	0.008	BSP 1/4	DIN 3852-2-X
5050-03F	1000	256	5010-03F	1600	156	250	23	46	0.010	BSP 3/8	DIN 3852-2-X
5050-04F	1100	253	5010-04F	1500	151	250	45	90	0.012	BSP 1/2	DIN 3852-2-X
5050-05F	1100	445	5010-05F	1400	282	250	100	200	0.020	BSP 3/4	DIN 3852-2-X
5050-06F	1000	789	5010-06F	1300	423	250	189	280	0.030	BSP 1	DIN 3852-2-X

DNP Series: PLT1
 *Other sizes available on request

